
Annual Report of the PCC 2025

The Parish of St Mary's Church Charlbury with All Saints' Church Shorthampton



**This report is offered by the
Parochial Church Council (PCC) to the
Annual Parochial Church Meeting
as a record of its activities for 2025**

Registered Charity number 1193530

Contents

Year Summary	3
Safeguarding	6
Structure, Governance and Management	8
PCC Membership 2025	9
Attendance and Church Registers	10
PCC Reports	
Fabric	11
Churchwardens	12
Children and Young People	14
Deanery Synod	16
Other Church Activities	
Font Café, House Group	17
Cornerstone	18
Choir and Organist	20
Bell Ringers	21
Stay and Play, Prayer Ministry, Memory Café	22
Flower Arrangers	23
Churches Together in Charlbury	24
The Leaflet, Prayer Shawl Ministry, Sacristans	26
Communications	27
Fundraising	28
Christmas Tree Festival	29
Friends of Shorthampton Church	31
Oxfordshire Historic Churches Trust Ride and Stride	32
Reverse Advent Calendars, The Children's Society	33
Financial Review	34
Appendix 1: 2025 Financial Statements:	
Financial statements	36
Independent Examiner's Report	40
Appendix 2: APCM 2025 - Minutes	41
Appendix 3: APCM 2026 - Agenda	43

Year Summary

It has been another year of great blessing at St Mary's and All Saints'. We have continued to see growth in the size of our worshipping community, in our scope for showing love in our community and in our sense of what God might be calling our churches to do.

This has not just been purely numerical, we have seen a deepening of faith. From five confirmations and a good number of adult and infant baptisms, we can honestly say that the Lord is adding to our number those whom he has called. But with prayer initiatives, lectures, small groups and study opportunities, there is much to rejoice in among people finding their faith deepened and reinvigorated.

It is not that we are without challenges- the fabric requires constant attention and there are areas where we need to think carefully about how we approach the next few years - but the vast majority of these challenges are opportunities in disguise and stem from more people wanting to be part of our life together. In particular, we would love to provide more opportunities for children and families to worship and to reach out to them midweek as well. As always, if you can help us with this - for just a few hours or so monthly - please be in touch!

We continue to be an essential part of the wider life of the town of Charlbury - from the Beer Festival to the Fete to the hosting of our new monthly soup lunches - I am immensely grateful for all those who make such opportunities, however small, to show the love of Christ to our neighbours.



The Newest Member of the congregation

Thanks, therefore, is the main theme of this report. Thanks is due to Josie, who works very hard in the office, Jo who has been a continued source of hope at Cornerstone and Angie who this year finishes cleaning for us. Our wardens Paddy and Dine and the whole PCC continue to be an immense support. Richard and Denise and the choir continue to support our liturgy and worship with great aplomb. I am immensely grateful to God for them all.

Thanks is also due to all the wonderful people - too many for me to name! - who enable, support and sustain our ministry. You will read about joy giving and life sustaining activities of every possible sort: each of those has a committed set of wonderful volunteers behind them. I want to take this opportunity to thank them and to tentatively - if you're reading this and aren't involved - invite you to join them.



Community Lunch for Candlemas

Finally thanks is due to God- for his goodness, his mercy, his blessing and his grace.

‘Praise God from Whom all blessings flow
Praise Him all creatures here below
Praise Him above, you heavenly host
Praise Father, Son and Holy Ghost.’

Amen.

The Reverend F.B. Butler Gallie



Rev Fergus Butler-Gallie and one of our churchwardens Paddy

Safeguarding

St Mary's Charlbury and All Saints Shorthampton are committed to safeguarding children and young people, vulnerable adults and those in abusive relationships. We aim to create a safe environment where children and young people are nurtured and protected and where all people, especially those who may be vulnerable for any reason, are able to worship and pursue their faith journey with encouragement and in safety. All staff and volunteers in roles which involve working with children or vulnerable adults are recruited according to the House of Bishops' Safer Recruitment Practice Guidance. For those in eligible roles this includes the parish undertaking checks with the Disclosure and Barring Service (DBS).

To support parish safeguarding work, the diocese uses a Safeguarding Dashboard developed by Clearly Simpler Limited. The purpose of the system is to make safeguarding administration and governance streamlined for all parishes. St. Mary's and All Saints' has engaged with the parish dashboard system and our clergy, employees and volunteers are fully up to date with the current requirements. We have also started using a new service called the Safeguarding hub which tracks safer recruitment and training for all roles and post holders.

Training

Training for our clergy, staff and volunteers in Safeguarding matters is mandated by national Church of England requirements. The level of training required depends on the role being performed. The management of Safeguarding training for clergy is undertaken by the diocese, but the responsibility for ensuring our staff and volunteers are trained remains with the PCC and Parish Safeguarding Officer. We endeavour to ensure that all of our staff, volunteers and clergy are up to date in their training. The Parish Office keeps up-to-date records on the type of training required for each level of volunteer.

The Parish Safeguarding Policy Statement is on display in both churches.

More information on safeguarding in parishes can be found on Oxford Diocese website: <https://www.oxford.anglican.org/safeguarding>

We will act promptly on any complaints made and work in close partnership with police and social care services where children or vulnerable adults have been harmed or are at risk of harm or mistreatment. We provide safe recruitment, training and support to our voluntary and paid workers with children and vulnerable adults. We care for those who have been abused in the past and minister appropriately to those who have abused.

What to do if you have a safeguarding concern

If you have information about a safeguarding situation where a child or adult is in immediate danger, or requires immediate medical attention, call emergency services on 999. If you do not think there is a risk of immediate harm, you should still speak to an official about your concern as soon as possible.

For general queries and advice contact the Parish Safeguarding Officer, Louise Whitehead (07972 860646; louisevwhitehead@gmail.com)

if you have urgent safeguarding concerns, or need to make a disclosure regarding church-related abuse, please make direct contact with the Safeguarding Team at the Diocese of Oxford (01865 208295; safeguardingreferrals@oxford.anglican.org; Mon-Thurs 9am-5pm and Fri 9am-4.30pm).

All phone or email referrals to the safeguarding team must be followed up by completing the Safeguarding referral form available at www.oxford.anglican.org/safeguarding and returning it to safeguardingreferrals@oxford.anglican.org

At other times:

For urgent safeguarding enquiries outside of operational hours, please call our partners Thirtyone:eight on +44 (0) 303 003 1111 for confidential advice, guidance and support.

Finding Support

We understand that reporting abuse may be very difficult and distressing and it may add to your hurt by our not being able to immediately assist you. Therefore here are the contact details of other agencies that are available to assist either on a 24-hour basis or through specialist helplines and services:

NSPCC Child Protection Helpline: 0808 800 5000 (lines free and open 24 hours).

Phone if you are worried about a child.

Child-line: 0800 1111 (lines free and open 24 hours). Phone if you are a child or young person and are worried about anything.

National Domestic Violence Helpline: 0808 2000 247 (lines free and open 24 hours). Phone if you are experiencing domestic abuse.

Samaritans Helpline: 08457 90 90 90 (open 24 hours). Phone if you feel you are struggling to cope and need someone to talk to.

Action on Elder Abuse Helpline: 080 8808 8141 (free phone Monday to Friday 9-5pm).

If you have lived with experience of abuse from within the Church of England, you may prefer to call the dedicated telephone NSPCC helpline, which is independent of the Church. Call 0800 80 20 20 .The NSPCC helpline is also available to anyone wishing to provide information or to raise concerns regarding abuse within the Church of England. The helpline is there for you whether you are reporting issues relating to children or adults or seeking to whistleblow about poor safeguarding practice. Your call is confidential, and your concerns will be taken seriously.

Louise Whitehead, Safeguarding Officer
louisevwhitehead@gmail.com

Structure, Governance and Management

The method of appointment of PCC members is set out in the Church Representation Rules. Members of the PCC are either ex-officio (as office holders) or elected at the Annual Parochial Church Meeting (APCM) by members of the congregation who are on the electoral roll of the church. All who attend our services or are members of the congregation are encouraged to register on the electoral roll.

The PCC are responsible for making decisions on all matters of general concern and importance to the parish including deciding how the funds of the PCC are to be spent. The full PCC met six times during 2025. Sub committees met and reported back to the PCC.

Administrative information

The Parish of Charlbury with Shorthampton comprises St Mary the Virgin Church, Charlbury and All Saints' Church, Shorthampton. It is part of the Chipping Norton Deanery in the Dorchester area of the Diocese of Oxford. The correspondence address is The Parish Office, c/o The Vicarage, Church Lane, Charlbury, Oxfordshire, OX7 3PX. parishoffice@charlburychurch.uk 01608 810230.

The PCC is a body corporate (PCC Powers Measure 1956, Church Representation Rules 2006) and Charlbury with Shorthampton is registered with the Charity Commission. Registered Charity Number: 1193530.



Mothering Sunday Flowers in St Mary's Church

PCC Membership 2025

The following have served as members of the PCC:

Incumbent Revd Fergus Butler-Gallie

Churchwardens Dine Glasgow (Vice Chair)
Paddy Gallagher

Hon. Secretary Mary Bentall

Hon. Treasurer Peter Durrant

PCC Safeguarding Louise Whitehead

**Deanery Synod
Representatives** Paddy Gallagher
Until 2026 Roy Scott

Elected Members

Until 2026 Mary Heckman

Liz Partington

David Vernon-Jones

Louise Whitehead

Until 2027 Daniela Jenkins

Nikki Rycroft

Jenny Welsh

Until 2028 Amanda Cooper

Anna Boardwell

Libby Hanks

Mike Summers

Attendance and Church Registers

The average Sunday attendance (all Sunday services) was 97 adults and 7 children at St Mary's and 32 adults at Shorthampton. The numbers for Christmas, Easter and other occasions are detailed below:

Christmas and Easter	Attendance	Communicants
St. Mary's (Easter)	228	141
Shorthampton (Easter)	30	28
St Mary's (Christmas 24/25 Dec)	908	201
Shorthampton (Christmas Day)	60	48

Special Services	St. Mary's	Shorthampton
Harvest	77	60
Thanksgiving for the Departed (All Souls)	29	-
Remembrance Service	90	19
Carols by Candlelight	812	75
Children's Messy Nativity	49	-
Patronal	79	68

Church Registers	St. Mary's	Shorthampton
Baptisms	10	3
Marriages	3	2
Blessing of Marriage	0	0
Funerals in church	10	1
Funerals at crematorium	2	0
Burial of ashes	3	2

PCC Reports

Fabric

St Mary's Church

The quinquennial report for St Mary's dated January 2024 pointed out that repairs of the lead roof were necessary in several places. These repairs were undertaken under our architect's supervision early in this year. These repairs are working well but unfortunately, while the roofers and architect were aloft it became clear that the lead covering the South Aisle was extremely thin and approaching the end of its useful life. The advice is to replace this within the next two years at a cost of £50,000 excluding VAT. A fund has been initiated but a serious fundraising campaign will be necessary.

The old gas boiler in the small loo failed and was not repairable. It was replaced with a new electric boiler. No sooner had we paid for this when the old boiler in the Memorial Chapel also permanently broke down. This could not be replaced with an electrical version as the overall electrical input to church was not powerful enough. Instead the Memorial Chapel radiators were joined onto the radiators in the chancel. The diocese will not allow installation of new gas boilers.

During the year minor electrical repairs have been necessary, including the replacement of a broken smoke alarm. An easy task apart from the fact that it was on the Nave ceiling!! All of the trees in the churchyard were surveyed and deemed safe. They were trimmed as necessary. A section of the churchyard dry stone wall fell into a neighbour's garden. The repair by our wall repairers is a work of art. Have a look.

This year we finally got the clock back in action. This was the conclusion of a major program of works to return the clock to full functionality, including replacement of the "Great Wheel" which drives the chiming train, adjustment of the cables to the hammers and separating the supply to the chimes from the light. The clock is keeping consistent time, although deliberately set two minutes fast for the benefit of those rushing for the train. We had a visit from the chairman and a member of the Ancient Horological Society who were complimentary on the quality of the work and condition of the clock.

Mike Summers & Paddy Gallagher
paddygallagher@hotmail.co.uk

Churchwardens

Every New Year in the life of a church brings excitement, potential, and challenges. Whilst the challenges might get top billing in some years, 2025 was definitely not one of them. The year was filled with growth and accomplishment, as the excitement was justified, and the potential, realised.

Much of the excitement and potential came from the beginning of Fergus' second year in the pulpit – we are so blessed to have him as our Vicar. Thanks in large part to Fergus' creativity and openness to new ideas, as well as some key volunteers, our church grew in several dimensions last year.

1. All of our congregations expanded in size, and the services had a resulting boost of energy. In parallel, with Fergus' encouragement and leadership from Liz Partington and Libby Hanks, the number of home groups increased to the highest number we can recall. What a great combination of higher attendance and stronger fellowship.
2. Fellowship was also strengthened by the new quarterly Parish lunches that follow a slightly later service at St Mary's to tie into a meal together. Libby, Liz Partington, Mary Bentall, Rachel Gallgher and Denise Summers have been instrumental in organising sumptuous spreads for 50 - 60 participants.
3. Anna Boardwell spearheaded the Women in the Bible series which was a rousing success, giving ordained and lay people the opportunity to share their knowledge and expertise. Anna's efforts were an inspiration to the rest of the congregation to pursue their interests and get involved as lay people.
4. Two big changes to the Holiday Club paid huge dividends last year. First, under Rachel's leadership, the team shifted the event by one week to avoid an overlap with the Wilderness Festival. That switch led to much higher attendance throughout the week by children. Second, in addition to his other roles at the Holiday Club, Fergus made sure he was there every day to greet the parents as they dropped off their kids. This effort greatly increased the number of parents and children attending the special service at the end of the week.
5. Fundraising reached new heights last year due another powerful combination of Fergus' support (he attended and contributed to every single event) and volunteer verve. Under Daniela Jenkins' amazing leadership, we raised more money from more fundraising events than ever before. As a bonus, many of the events attracted large numbers of Charlbury people into our wonderful church.
6. The star of the year was the production of Twelfth Night, that would never have had lift-off without the monumental efforts of Bill and Tonya Wood, Amanda Cooper, and Peter Durrant. There was also a separate, but very significant fundraising effort that generated over £8,000 for our sister church, Our Lady of Kazan Church in Slatyne, Ukraine. Fergus did much of the heavy lifting on this effort of outreach to a community devastated by the war with Russia.

None of the above would have been as successful without the help of Josie Cope who joined our Parish team in January, replacing Jo Paton as the Parish Administrator. Josie has been incredible in her ability to take on so much so fast. Many thanks are owed to Jo for her decade plus in the role, especially for her help across two interregnums! Lucky for us, Jo is still helping us by managing the Cornerstone, and helping organise Messy Church which is getting stronger and stronger itself.

Ok, so there were some challenges, two of which come to mind. First, a significant electrical problem that resulted from our attempt to reduce our CO2 footprint, and left St. Mary's without power for several days. Second, a faulty gas boiler in the Memorial Chapel that finally gave up late last year (great timing). Fortunately, we are also blessed to have Mike Summers and the fabric team on the job to smooth out the many bumps along the way that come with a building, parts of which date back 900+ years.

The coming year offers new excitement, potential and challenges (including fundraising for a new lead roof over the South aisle!). However, we are confident that the challenges will again take a back seat to the abounding good news.

Dine Glasgow
dglasgow@theridgegroup.com

Paddy Gallagher
paddygallagher@hotmail.co.uk



Cricket Fundraiser & BBQ

Children and Young People

Sunday Club

Sunday Club meets in the Memorial Chapel during the 10 am service every Sunday. The children process out to the chapel during the Gloria, receiving a blessing from the celebrant on the way. We usually start with an active game - races and hiding games are popular - and the children are great at suggesting new games and variations themselves. Then we'll light a candle and read the Gospel together, wondering and praying about what it might mean for us, with our friends, our family, at school and in the wider world.

Then we move on to art, craft, play or other activities. We join parents and the wider congregation to receive Communion or a blessing, then return to the chapel to continue our activities until 'biscuit time'.

It's wonderful to see the children developing their questioning and understanding and putting this into practice, for example in how kindly the older children welcome and help the little ones. And this year, we celebrated the confirmations of two of our regulars, Ewan and Sedi.

As much as they like the usual Sunday Club pattern, the children have also really appreciated and engaged with the services where they stay in church with the adult congregation, joining Fergus around the altar.

Thank you to everyone - ministry team, parents and congregation for your support!

Christine Pearce and David Nicholls



Messy Church

Holiday Club

In August, we welcomed 50 plus primary school aged children to the annual Churches Together Holiday Club. In a setting of giant leaves, flowers, butterflies and vines, along with the amazing scenery from Noye's Fludde, St Mary's was transformed into an exciting equatorial rainforest. Over the four mornings, children, teenage helpers and adults learned about God's love and His wonderful creation through stories, songs and music, games, funny plays, art and craft and more. This year, each of the daily Bible stories featured animals: Daniel in the Lions' Den, The Palm Sunday Donkey, Elijah fed by Ravens and Rebekah and the Ten Camels.

The special service on the Sunday was an opportunity for all ages - parents, grandparents, carers, friends and our regular congregations - to share in what the children had been doing during the week.



CTC Holiday Club

Once again we worked with the Community Centre team who offered sports sessions each afternoon through the week. By providing a full day of activities, this allowed some children to attend Holiday Club who perhaps otherwise could not have done.

Christine Pearce and David Nicholls

Messy Church

St Mary's Messy Church was held on Sundays in March, September and December as well as on Good Friday, led by Fergus, Jo Paton, Sue Holiday (music), and Paddy Gallagher (tech and AV). We have continued with afternoon messy churches, complementing the monthly community breakfasts.

Messy Church continues to attract a different congregation to Sunday mornings, with families invited to attend Sunday morning services. We are very grateful to those that help and would welcome more volunteers.

Jo Paton
parishoffice@charlburychurch.uk

Deanery Synod

Charlbury and Shorthampton is part of Chipping Norton deanery, which covers a large mostly rural area of West Oxfordshire Cotswolds. Most parishes in the deanery are important to the people of very small villages and hamlets, whilst Charlbury and Chipping Norton are two larger settlements. Liturgical practice and perspectives in churches across the deanery are in some places very different from one another but the synod, which hosts representatives from every parish, offers opportunities to exchange understandings and learn about their various social progress actions.

Recent meetings have taken synod members into the daily life of parishes. The farmer at Bruern, a communicant at Fifield Parish Church, described in detail the challenges of farming and how his farm tries to take proper care of its land and all life that resides and benefits from it. The farm has returned entirely to the use of traditional seeds and the farm runs its own mill to offer flour from resulting grains to select bakeries as well as some local shops.

We also met at the brewery in Hook Norton where the director of the family firm supports barley from local farmers and draws its water for brewing from a huge underground aquifer that stretches from Hook Norton to Banbury. The brewery has taken the initiative to collect used vehicles including ambulances, trucks and fire engines, which volunteers drive to Ukraine to support communities suffering from the invasion. The brewery has already taken across Europe over 100 essential vehicles.

The synod system carries the democracy of each parish through its PCC to deanery and then diocesan levels and on into the national general synod of the Church of England.

Roy Scott, Deanery Synod Rep.



Church flowers

Other Church Activities

Font Café

Where else in Charlbury can you get a barista style cup of coffee and a generous portion of home-made cake for only £3? Each Thursday morning St Mary's continues to host Font Café where people meet friends old and new and have a chat over a hot drink and slice of cake. It's also a popular place for informal meetings.

Young children and their carers like to chat and play with the toys in the Memorial Chapel and squash or water and biscuits are also available. I am standing down after five years of serving drinks and so there is a vacancy on the team: if you fancy learning how to make our signature Cappuccino- it's not that difficult and full training will be provided- please speak to Paddy.

Liz Partington liz@pjohnp.me.uk



Home Groups

There are now 4 small groups meeting regularly, either monthly or fortnightly, with between 8 and 10 people in each. They all have a different flavour and format, but the common thread is the exploration of our faith and deepening our connections with each other in an informal setting. Some groups are following Bible studies while others have discussions on recent sermons, and some are using materials such as Psalms, songs and poems for times of reflection and prayer. All the groups report that they are becoming increasingly close and are able to share prayer needs and provide support for each other. We would love to be able to increase the number of groups, and would particularly like to find another host for the daytime group which has sadly had to be put on hold for the time being. We would welcome offers to host or lead groups – no specific skills are required, we're all learning together, and training and support would always be available if wanted.

Libby Hanks

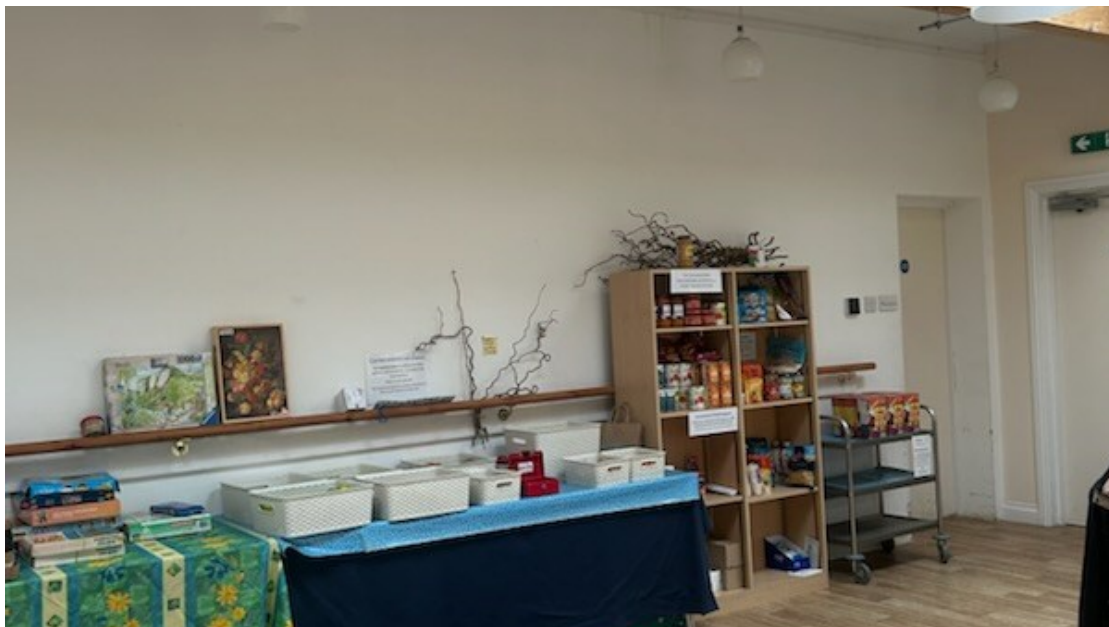
Cornerstone

Cornerstone opened at the Corner House on 10th August 2020 when the Covid pandemic was very real to us all. We were able to be open six mornings a week in the Corner House giving a space for people to come to and chat with volunteers at a time when community interaction was so needed. Fast forward to five years later and Cornerstone is thriving and a key part of the Charlbury Community. We continue to be open Monday – Saturday mornings 10am – 1pm, at the Corner House providing a space for the sharing of local surplus food and spare food from across the county mainly through donations from SOFEA and Oxford Food Hub.

We have helped to reduce food waste and to reduce food miles, with many people coming in regularly to see what fruit and veg we have in store and basing their meal around our surplus or taking fruit away to make us jams and chutneys. We work with many Charlbury businesses and receive their surplus when they can no longer sell it, but we can give it away.

During 2025 we have continued to support about 25 Charlbury struggling households with the assistance they need - food support, help towards energy bills, shoe vouchers and school uniform boxes, as well as signposting to support services such as Citizens Advice and the Branch, help with applications and accessing information. All our households have been regularly reviewed, assessing the level of support that they require, aiming to encourage more independence where possible.

From January we have held monthly soup lunches in St Mary's Church for Cornerstone households, giving space and time to talk. Since September, we successfully opened these to the wider community with around 15 – 20 people attending each month.



Cornerstone in the Green room

Cornerstone operated from the Green room of the Memorial Hall for March and April, whilst the windows were updated in the Corner House. The Green room was a lovely venue to work from, but the footfall was significantly lower. In May we moved back into the Corner House.

Over a few months we worked with the Charlbury Community Centre and West Oxfordshire District Council You Move project to help families who are on a low-income access leisure and exercise facilities at a reduced cost. The Community Centre joined up to the district project and we participated in a successful open day on 11th May for all in Charlbury. We continue to have a second-hand school uniform exchange for Charlbury Primary school and Chipping Norton Secondary school, as well as second hand children's books and games available for a small donation. We work with the Corner House book team supporting the sale of fiction and non-fiction books through the building.

At Christmas we again joined forces with the Christmas Tree Festival on the Giving Tree Initiative – providing presents for over 25 children and hamper foods to 25 households. Many thanks to our amazing volunteers who help at Cornerstone, by doing a shift in store, collecting surplus food from around Oxfordshire and by delivering food parcels to families. Grants have been received in 2025 from the Wilderness festival, Christ Church Oxford, Charlbury Beer Festival and the Oxfordshire Connected Communities Fund. We continue to be very grateful to local residents and community groups who support us with financial donations in store and online.

Here are some amazing stats about what we have achieved over the five years

- Over 4000 hours of volunteer time have been donated to enable us to be open six mornings a week
- Over 600 hours of driving has been carried out by volunteers collecting surplus and delivering food parcels
- More than 3500 food parcels have been given out to households who are struggling
- Thousands of apples, pears, plums, damsons and quince have been enjoyed by the residents of Charlbury and surrounding villages
- Over 13750 kilograms of surplus food has been received from SOFEA plus a similar amount from Oxford Food Hub – meaning that all this food has been used and enjoyed rather than going to waste
- Cornerstone has been open about 1500 mornings with between 20 and 70 visitors each day – that's over 50000 visits in total
- Almost £100,000 has been donated to Cornerstone since we opened.

If you would like to know more do get in touch.

Jo Paton, Cornerstone Manager
cornerstone@charlburychurch.uk



Giving Tree Initiative

Choir and Organist

2025 found us grieving the lose of Liz Walton who died very suddenly on the 1st of January. Liz was a long standing member of the choir, we miss her kindness, generosity and organising qualities. We sang at her funeral enjoying the surprising music she had chosen for her farewell at the end of the service.

Luckily our numbers have remained constant we welcomed Maggie adding her musical knowledge to the sopranos. Richard has continued to find us interesting if challenging music to learn and increase our repertoire. The demand for the choir has fallen away, only one wedding and two funeral outside of our obligation to the church services. We have sung six Choral Evensongs, the weekday services and every Sunday through out the year. When Christmas arrived we sang at all the services on Christmas Eve and Christmas Day and were back again the following sunday.

We are a happy and supportive group, but we would always welcome you if you would like to give us a try. Do speak to Denise or Richard, we would be very pleased to encourage you to join our group.

Denise Summers
denise@summwhere.co.uk

Richard Fairhurst
richard@systemeD.net



St Mary's from above

Bell Ringers

It's been a difficult year in the belfry. In January I slipped in the snow and broke my ankle in two places. I was in plaster for nearly six months so the belfry was out of bounds for me. In my absence Matthew and Maureen stepped forward and took over managing the practices and service ringing, thank you both. They concentrated on improving the striking, with noticeable results. Despite having 13 ringers on the books, there were several times when we struggled to field a full band. Apart from my absence, there were several regulars who had to take time off with illness or other circumstances. To counteract this we had a new ringer join us, Neil, who moved in to the town from Tackley – a welcome boost. I am happy to say that at the end of the year some ringers were able to rejoin us and others rallied round and helped out during our shortage.

Our bells are over 300 years old and the ancient art of bell ringing has been active since then and we are keen to continue the tradition at Charlbury. If curiosity gets the better of you, you are welcome to visit us at our practice at 7:30 on Wednesday evenings or before the 10 o'clock service on Sundays

Mike Summers
mike@summwhere.co.uk



Teddy zipwire from the bell tower.

Stay and Play

St Mary's Stay and Play is a noisy, happy Friday morning welcoming parents, carers, babies and under 4s to Charlbury Bowls Club where we meet for free play, refreshments and friendship. One mum told me recently that when she was suffering post natal depression the group was the only place she felt safe to come to. There is a theme each week with crafts, plenty of toys, a cosy book corner and singing as a group at the end. Recently an information officer from West Oxfordshire Council came to chat to the parents individually about nursery provision and funding.

Thank you so much to our team of volunteers - one of our grandparents is joining the rota because she misses coming now her grandchildren have moved on!



Sue Hadley at Stay & Play

Sue Hadley
parishoffice@charlburychurch.uk

Prayer Ministry

Prayer Ministry at St Mary's continues to be an important expression of St Mary's commitment to prayer and pastoral care. This ministry is rooted in the Church's calling to "pray for one another" (James 5:16) and to "bear one another's burdens" (Galatians 6:2). Two members of the team are available to welcome and pray with or for guests in confidence following the 10am service every other Sunday at the East end of the church. Through attentive listening, prayer, and discernment, the team offer a safe and compassionate space in which people may bring personal needs before God. The ministry operates in accordance with diocesan safeguarding guidance and good pastoral practice.

Sarah Vernon-Jones

Memory Café

Our monthly meeting at the Bowls Club continues to attract those who are experiencing symptoms of dementia and their carers. We continue to be grateful to Dementia Friendly Charlbury for their support with transport especially as a number of our clients come from outside Charlbury.

Together with carers we provide a space for craft activities and games in pleasant surroundings. Visitors to the sessions include musicians and singers whose performances were heartily enjoyed.

My thanks to all our helpers who make the café possible.

Jan Fielden
janf1276@hotmail.com



Flower Arrangers

It has been another wonderful year for flowers at St Mary's, with our flower-arranging team doing a superb job creating beautiful arrangements throughout the year.

I am extremely grateful to the whole team for the time, care, and effort they put into providing flowers for regular services as well as for festivals. The support they give me as well as each other is very special. Flowers in the church help to create a warm and welcoming atmosphere for both visitors and parishioners, and they are often commented on and much appreciated.

We have provided flowers in the church and the churchyard on a weekly basis and for special occasions. The team has supported Mothering Sunday, Easter, Harvest, Remembrance Sunday, Christmas, baptisms, weddings, and funerals. Two members of the team also created the altar of repose and garden of remembrance at the east end of the church for Easter, which were beautiful and very appropriate.

We have continued our Flowers in Memory scheme, where flowers can be sponsored for a fortnight in memory of a loved one. Please contact the Parish Office if you would like to take part in this scheme.

On February 12 2026, the General Synod of the Church of England passed a motion from the Diocese of Worcester encouraging churches and cathedrals to adopt more sustainable floral practices, including reducing or banning single-use plastic floral foam and using locally sourced, seasonal flowers. As part of the Sustainable Church Flowers movement, this aims to cut microplastic waste and carbon emissions.

St Mary's is committed to reducing the use of plastic-based floral foam, using natural support methods, and sourcing flowers and foliage locally, from British growers, and from our own gardens and hedgerows where possible.

Hilli Waller
hilli.waller@gmail.com



Churches Together in Charlbury

The year began with a united service for the Week of Prayer for Christian Unity led by the Friends in the style of a Quaker meeting. This was followed by the AGM at which Nick Cave, a member of the Friends who has been an ecumenical accompanier in Palestine and Israel, gave a moving talk about the current situation in the West Bank.

At the end of January, Frances Canham took 32 bags and boxes of useful things collected in Advent to the Porch in Oxford. Many thanks to Frances for doing this for so many years and to Cornerstone for helping to promote the Reverse Advent Calendar appeal and receiving donations together with St Mary's and the other churches.

In March we celebrated the World Day of Prayer with a service beautifully prepared by women of the Pacific Cook Islands and led by St Mary's. The following week we started a series of five Lent talks, held in St Mary's, based on 'Images of Jesus in Art and Poetry.' Markus Bockmuehl, Nick Wood, Roger Wagner, Esther Lay and Elizabeth Koepping shared a wide variety of insights and images of Christ through pictures and poems. On Fridays in Lent soup, bread and cheese lunches were provided by the Friends, Baptists, Methodists and St Mary's, with proceeds going to Christian Aid.

On Good Friday around forty people joined in Walking the Way of the Cross with prayers, readings and hymns at each of the places of worship, ending with coffee and hot cross buns at the Methodist Church. We were again grateful to Richard Fairhurst for playing his accordion for the hymns and the Methodists for organising the refreshments.



Churches Together Stall at Street Fair

Sadly, the Revd Andrew Biggs came to the CTC meeting on 9th April to confirm that the Charlbury Methodist Church would be closing for worship this year, with the final public thanksgiving service on 20th July. Members will transfer to Chipping Norton Methodist Church but meetings for worship are being held regularly in Charlbury, either in the Memorial Hall or in someone's home. We in CTC are aware of how hard this process has been, especially for Stella Bristow, and are thankful the work of caretaking, emptying and closing the building is now done.

In May the Revd Andrew Biggs preached at the Christian Aid service in St Mary's. Thanks are due to Sue Tokumine and the small group who organised the distribution of envelopes and counted the Christian Aid Week collection. Thanks also to Cornerstone for receiving donations. Over £4000 was raised for Christian Aid.

In August, the Holiday Club was held a week later than usual to avoid the Wilderness Festival weekend. 53 children attended aged between 4 and 11 years, with 21 adult helpers and one teenager, coming from all the local churches and beyond. The family service on Sunday was standing room only.

In September Churches Together took part in the Street Fair again. Rachel Gallagher organised the Home Made and Home Grown stall, which was well supported. It is an important public statement of the churches' commitment to the community.

A united service of Holy Communion was held in St Mary's in November led by the vicar. The next day it was a great shock to learn that Joan Belshaw, who had helped to lead the intercessions in the service, had died during the night. She was a pillar of the Baptist Church and for Hugh and their family. She had a wide variety of interests and concerns and was committed to ecumenism, wherever she and Hugh lived.

In December the CTC Christmas card featured one of Jenifer Wates' paintings. We are glad she is now restored to health after a tough year. Sue, Stella and other Methodist friends dressed wooden clothes pegs as shepherds and magi to decorate a tree for the Christmas Tree Festival.

It has been a good and solid year of prayer and activity in the Christian community in which each person is a minister, a year of fun and friendship but also marked by sadness.

Elizabeth Koepping (chair) and Rosalind Scott (secretary to CTC)
rosalind.scott@hotmail.co.uk

The Leaflet

Throughout 2025 we have continued to print and distribute The Leaflet to over 1500 homes in Charlbury and surrounding areas every two months. We have also been pleased to help with the distribution of community information flyers including the Charlbury Street Fair brochures. None of this would be possible without the support and enthusiasm of our 46 volunteer distributors. We are very grateful to them all. We are also equally grateful for the contribution of those who stood down during the year and for those who offered to help instead. We are also very grateful to the PCC for their support in streamlining the printing of the Leaflet through a local print bureau which has reduced the demands on parish office time and equipment.

Phil Roberts
philroberts76@outlook.com

Prayer Shawl Ministry

The Prayer Shawl Ministry is also a Care Shawl Ministry making scarves and shawls for anyone who would like extra warmth especially when they are needing emotional consolation, Several have also been given to people attending Soup lunch. Gifts of yarn have been very welcome. If anyone would like a shawl or scarf for themselves or someone they know please ask Denise or myself.

Leah Fowler
leahfowler@btinternet.com

Sacristans

This year has seen the Sacristan team go from strength to strength. The team has gained new recruits and has built upon their skill set, a particular highlight being the preparation for the combined service of baptism and confirmation. Special thanks in helping for these goes to Mary Bentall. The Christmas services also proved to be a challenge, but with plenty of planning and teamwork it went without a hitch (mostly!). Other big events have included a decluttering of the vestry and a pre-Christmas polishing of the brass and silver. New linen was embroidered for the church, for which we are most grateful as this makes the day-to-day job of the sacristans easier. Our deepest thanks go to Denise Summers for her hard work and skill. The linen will be much appreciated for years to come. In the future we are hoping to acquire a new green frontal for the altar as this is in urgent need of repair. If anyone would like to join the team, please feel free to contact any one of us, we are a friendly bunch.

Finally, heartfelt thanks go to Judy French who provides unwavering support and guidance and without whom we would be very stuck.

Maggie, Nikki, Rachel, Miriam, Ann, Elaine and Judy.

Communications

News of services and upcoming events for St Mary's and All Saints continue to be reported weekly in The Messenger, which is emailed to the churches' distribution list and is also available in paper form. The format is currently under review. Upcoming events are also reported in The Leaflet which is delivered to all households in the parish every two months.

Information about St Mary's is also kept up to date on the church website, as well as links to recordings of recent sermon recordings. St Mary's also has a Facebook page (stmaryscharlbury) and an Instagram page (stmaryschurchcharlbury) which post news items. Please do follow these pages and share our posts to increase the reach and spread the news about our services and events to a fresh audience.

Libby Hanks



Church Fete

Fundraising

As the table below illustrates in no uncertain numbers, 2025 was an extraordinary year for fundraising. If necessity is the mother of invention, it is also the mother of new events to raise money for our churches. Given a large projected shortfall in our operating budget, the PCC was faced with the challenge of finding the extra money to balance the budget.

Under Daniela Jenkins' inspiring leadership, the fundraising team introduced numerous new events to fill the funding gap. Though the production of Twelfth Night rightly stole the spotlight given the complicated scope and logistics involved, the Gilbert & Sullivan, the extra tea at Chastleton, and Noah's Flood are also wonderful examples of individuals giving their time and talents for the benefit of all.

Events	Money raised	
Noah's Flood	£ 215	Paddy
St George's Day Pub Event	£ 200	Anna
Chastleton Teas	£ 327	Mary
Priory Open Gardens Teas	£ 686	Libby/Denise
Shakespeare @ Old Rectory	£ 3,231	Amanda/Peter/Woods
Church Fete	£ 3,086	Paddy
Beer Festival Tea Tent	£ 1,800	Daniela
Wilderness Ticket Auction	£ 709	Daniela
Cricket Tournament	£ 1,040	Fergus
Ride & Stride	£ 512	Georgie
Wine Tasting	£ 3,000	Dine
Street Fair	£ 250	Paddy
Chastleton Tea	£ 695	Mary
Sounds Historical	£ 409	Paddy
Gilbert & Sullivan Sing-a-long	£ 972	Fergus
Ukraine Concert	£ 1,208	Paddy
Christmas Tree Festival / Wychwood Chorale	£ 3,005	Anna/Amanda and Maureen
Grand Total	£ 21,345	

We owe huge thanks to all of those who helped us address that shortfall: the organisers, their helpers, and the generous attendees. Here's hoping we don't need to be so inventive in the future.

Dine Glasgow



Christmas Tree Festival

The annual Christmas Tree Festival once again brought the community together in a wonderful celebration of creativity and festive spirit. Held from 12th December to 2nd January, the event featured beautifully decorated trees sponsored by local businesses, organizations, 'streets', families and individuals, each showcasing unique themes and designs.

This year, we raised over £3,000, thanks to the generosity of our community. The festival featured several wonderful events, including the 'Turning on the lights' celebration with music from the Children's School Choir, free Walking Tacos and mulled wine for attendees. The Wychwood Chorale hosted a special performance of 'Christmas Memories' and the Carol Service at All Saints Shorthampton brought everyone together in song and reflection.

Once again the festival included a special tree for the Giving Tree project, which was well supported by our community and enabled the Cornerstone to provide Christmas gifts to approximately 40 children and families, spreading festive cheer to those in need.

We are incredibly grateful to all the volunteers, sponsors, and participants who made this event possible. The Christmas Tree Festival continues to be a cherished tradition, strengthening community bonds and bringing joy to all. We look forward to an even more magical celebration next year!

A massive thank you to Anna Boardwell for planning and running this event, your efforts are hugely appreciated.

Daniela Jenkins



Christmas Tree Festival

Many thanks to the sponsors of our 2025 Christmas Tree Festival

CHRISTMAS TREE FESTIVAL



A big thank you
to all our sponsors

THE
BELL



Lycetts

House & Carriage
Moving done differently



THE BULL
CHARLBURY


EVENLODE

Shaw & Co.

Property, Trust and Probate Lawyers

Thank you to all
those in our community
who have sponsored and
decorated a tree.

Mr Joseph & Mrs Alex Bamford
Mike Chambers Decorating
and General Maintenance
Matthews & Wilson

Friends of Shorthampton Church

Funds: These are in a good position at the moment due to a very generous legacy; however we do have some big expenditure coming up so are not complacent.

FUTURE SPENDING:

Electrics and Lighting: We finally have the faculty decision after two years. All thanks to Paddy for persevering on this. Work commences in March.

Re-decoration is the next priority and will happen as soon as possible. There is some water damage which may need replastering before any painting can be done. A sample has been taken to ascertain whether we actually need to replaster this area or not.



Fund Raising 2025: The FOS organized a performance of Twelfth Night at The Old Rectory last June which was very well attended and raised £6,507. The proceeds were divided between the two churches; however it is worth noting that Bill Wood raised the entirety of the fee for the players (£3,600) from generous local sponsors. The incredible support of the Wood family over the years at Shorthampton will be sorely missed. We are planning another Shakespeare based event in 2027 which we hope might become a regular fixture in Charlbury.



Churchyard. A beautiful Amelanchier Tree and stone bench have been donated to the ashes garden by Mrs Debby Walker Arnott.

Amanda Cooper. Chair Friends of Shorthampton

Oxfordshire Historic Churches Trust Ride and Stride

The annual sponsored walk to raise funds for the Oxfordshire Historic Churches Trust was held on the second Saturday of September in 2025. A convivial party of walkers and two dogs visited all the churches and chapels in the town before heading out to Stonesfield to tick off two more places of worship. The party then went on to the White Horse community pub in Stonesfield to enjoy a ploughman's lunch together with a group from St Teresa's Catholic Church. Over £1000 was raised, half of which returned to St Mary's Charlbury. Thank you to all the walkers and sponsors.

Georgie Slack



Ride and Stride walkers and helpers

Reverse Advent Calendar

In Advent St Mary's and Cornerstone acted as collection points for donations to the Reverse Advent Calendar, when instead of receiving sweets or other gifts from an advent calendar on the days leading up to Christmas, we put aside food and other useful items to be taken to the Porch day centre in Oxford in the new year.



Donations for the Porch

Rosalind Scott for Churches Together in Charlbury

The Children's Society

About 40 households in and around Charlbury held a Children's Society Box this last year, in which small change was added throughout the year. An increasing number of people, chose to donate by cheque and bank notes, without holding a box. This year the box opening was on Saturday 15th November, when the contributions were counted. The Box Opening morning is always a happy, social occasion with coffee, tea and biscuits available for those who would like them. Thank you to the helpers on the day.

There was a collection for the Children's Society at the CTC Holiday Club Service in August.

Monies raised from the above was £712.00

Thank you to everyone who has supported this excellent cause this year.

Rachel and Paddy Gallagher
rmgallagher@btinternet.com



Financial Review

OVERVIEW

This was a relatively quiet year for parish funds. No major projects were undertaken following completion last year of the new kitchen in St Mary's and in anticipation next year of extensive and expensive repairs to the church roof. The focus was on consolidation and this was generally achieved, with the General Fund increasing in value by 4.6% and most other funds maintaining their value, the exception being Cornerstone which decreased in value by 32% almost entirely due to a drop in income.

UNRESTRICTED FUNDS

Unrestricted Funds comprise: (1) the General Fund and (2) Designated Funds which finance particular church activities.

General Fund

Income generally matched budget estimates, with further decreases in Parish Giving and Gift Aid being more than offset by increases in collections at services, a somewhat surprising result as collections were only formally reintroduced in the last few weeks of the year. It is to be hoped that this continues to provide a useful income stream in the coming year. However, special note should be taken of the Fundraising Committee which more than surpassed a very ambitious budget target of £15,165 by almost 30%. Expenditure was a little more erratic. Parish administration charges were higher than anticipated due largely to the recruitment of a new administrator and the necessary overlap with her predecessor as she settled into her new job. There was also higher than expected expenditure on maintenance and repairs as a result, amongst other things, of the requirement to undertake expensive repairs to the church clock, the purchase of a new boiler, and the installation of outside lighting for the Christmas Tree Festival (although this will have benefits for all future Festivals). Churchyard maintenance was also well above budget with repairs having to be made to the churchyard's dry stone wall and to some necessary tree clearance within the churchyard.

Overall however the Fund increased in value by £1536 and it remains above the mandated minimum value, of 3 months operational expenditure, as set by the PCC.

Designated Funds

Designated Funds comprise:

-The Legacies Fund, established in 2019 to ensure legacies were used in line with the wishes of donors to sustain and strengthen the church ministry and facilities. No donations were received but funds were used to help towards the cost of the new boiler and final work on the recently installed kitchen.

-The Font Fund receives takings from the weekly Font Café, to be used at the discretion of the PCC to support church activities. The only big expenditure this year was the purchase of a new coffee machine.

-The Commemoration Flower Fund raises money for the purchase of flowers in memory of loved ones and has been little used.

-The Roof Fund has recently been established to earmark money for the forthcoming roof repairs.

-The Slatyne Fund was set up to raise money to support a church in Slatyne, Ukraine. A total of £5,448 was raised through fund raising activities (concert and the sale of Christmas cards) and donations. Of this £3,746 has been transferred to the Ukrainian church for use in the local community, and the remainder will be sent as soon as a suitable project has been identified.

RESTRICTED FUNDS

Restricted Funds comprise:

-St Mary's Fabric Fund which continues to received limited donations and has been used to finance preparatory work related to the forthcoming repairs to the church roof.

-All Saints' Fabric Fund continues to receive donations from a dedicated group of parishioners much attached to the Shorthampton Church, and also benefitted from a very successful fundraising event, a performance of Twelfth Night, jointly supporting both All Saints' and St Mary's. A major project is anticipated to install new lights in and around the church and there has been some limited expenditure on preparatory work.

-Organ Fund was not used during the year.

-Memory Fund continues to run a regular café to provide support and counselling for members of the community with memory loss or dementia, and their carers.

-Cornerstone Fund continues to run a community hub, to provide food parcels to those in need and to help local families with grants towards their utility bills and school uniforms. Expenditure remained at a similar level to last year, but income was down by one third due entirely to a fall in the level of grants received, from £15,000 to £3,100 – a reflection of the demand for such grants and their limited availability.

OUTLOOK FOR 2026

This is going to be a really challenging year, with an ambitious fundraising target anticipated to balance the budget and with the additional requirement to raise some £40,000 for repairs to the roof of St Mary's.

Peter Durrant, PCC Treasurer
treasurer@charlburychurch.uk

Appendix 1: 2025 Financial Statements

Parish of St. Mary's Charlbury with All Saints' Shorthampton Financial Statements for the Year Ended 31 December 2025

STATEMENT OF FINANCIAL ACTIVITIES

	Unrestricted	Funds	Restricted	Total	Total
	General	Designated	Funds	2025	2024
Income from:					
<i>Donations + legacies</i>	78628	4277	35417	118322	135855
<i>Income from charitable activities/fundraising</i>	19718	2231		21949	24918
<i>Investments</i>				0	1532
<i>Other income</i>	19373	1959		21332	59568
<i>Charitable donation</i>				0	0
Total income from:	117719	8467	35417	161603	221873
Expenditure on:					
<i>Raising funds</i>	533			533	2182
<i>Expenditure on Charitable Activities</i>	115268	4806	34361	154435	168882
<i>Other Expenditure</i>	380	5077	5553	11010	36379
Total Expenditure on:	116181	9883	39914	165978	207443
Net Income/Expenditure	1538	-1416	-4497	-4375	14430

STATEMENT OF ASSETS AND LIABILITIES



	Unrestricted	Funds	Restricted	Total	Total
	General	Designated	Funds	2025	2024
Income from:					
<i>Donations + legacies</i>	78628	4277	35417	118322	135855
<i>Income from charitable activities/fundraising</i>	19718	2231		21949	24918
<i>Investments</i>				0	1532
<i>Other income</i>	19373	1959		21332	59568
<i>Charitable donation</i>				0	0
Total income from:	117719	8467	35417	161603	221873
Expenditure on:					
<i>Raising funds</i>	533			533	2182
<i>Expenditure on Charitable Activities</i>	115268	4806	34361	154435	168882
<i>Other Expenditure</i>	380	5077	5553	11010	36379
Total Expenditure on:	116181	9883	39914	165978	207443
Net Income/Expenditure	1538	-1416	-4497	-4375	14430

Parish of St. Mary's Charlbury with All Saints' Shorthampton
Financial Statements for the Year Ended 31 December 2025

NOTES

Note 1. The financial statements have been prepared in accordance with the Church Accounting Regulations 2006 using the Receipts and Payments Basis.

Note 2. Figures shown for 2025 have been revised to be consistent with the revised nominal accounts categories that were introduced in 2009.

Note 3. The distribution of monetary assets between unrestricted and restricted funds and the movement in funds during 2025 is shown in Table 1 below.

Table 1: Movement in Restricted and Unrestricted Funds (excluding Agency operations)

<u>Fund Type and Title</u>	Fund Balance B/F	Incoming Resources	Outgoing Resources	Fund Balance C/F
Unrestricted funds				
<u>General Fund</u>	32724	117718	116181	34261
SM Projects Fund (Kitchen)	0	0	0	0
Legacies Fund	6823	0	4806	2017
Font Fund	4615	1959	1331	5243
<u>Commemoration flowers</u> Fund	10	60	0	70
<u>Slatyne</u> Fund	1259	5449	3746	2962
Roof Fund	0	1000	0	1000
Sub-Totals - Unrestricted Funds	45431	126186	126064	45553
Restricted Funds				
SM Fabric Fund	6252	2518	768	8002
AS Fabric Fund	38273	8539	4535	42277
Organ Fund	287	0	0	287
Cornerstone	30995	24358	34361	20992
Memory Fund	464	0	250	214
Sub Totals Restricted Funds	76271	35415	39914	71772
TOTALS ALL FUNDS	121702	161601	165978	117325

Parish of St. Mary's Charlbury with All Saints' Shorthampton
Financial Statements for the Year Ended 31 December 2025

Note 4. Table 2 shows income and expenditure during 2025 broken down between the different fund groups. The General Fund is used primarily to finance the PCC's operational costs

Table 2 : Income and Expenditure by Group

	Unrestricted General	Funds Designated	Restricted Funds	Total 2025	Total 2024
Income					
Planned Giving	59035	4277	825	64137	59186
Other Giving	19593		22962	42555	49603
Gift Aid Recovery	11233	2231	2005	15469	16761
Grants	1000		4092	5092	27538
Fund Raising Activities/Events	19718		5532	25250	19328
Fees Income	5142			5142	4700
Legacies					27066
Cornerstone Initiative					0
Internal transfer					14696
Other income	1998	1959		3957	2995
Total Income	117719	8467	35416	161602	221873
Expenditure					
Parish Share	58088			58088	58091
Clergy Expenses	300			300	3625
Church and Outreach	1295		16241	17596	9733
Parish Administration + Office Expenses	18502		18370	36872	33480
Utilities and Insurance	13388			13388	13977
Church and Churchyard	9543			9543	14050
Cleaning/Maintenance	2669			2669	1450
Major Building Repairs + Improvements	11483	4806	3240	19529	34911
Fund Raising Costs	533			533	2728
Internal transfer					14696
Cornerstone					18534
Other Expenditure	380	5077	2063	7520	2168
Total Expenditure	116181	9883	39914	165979	207443
Funds Balance	1538	-1416	-4498	-4377	14430

Note 5. Table 3 shows the distribution of capital spending on building repairs and improvements.

Table 3: Capital Expenditure by Fund

	General Fund Reserves 2024	SM Project/ Kitchen Fund 2024	SM Fabric Fund 2024	AS Fabric Fund 2024	Total Capital Expenditure 2024	Total Capital Expenditure 2024
St Mary's Charlbury						
<i>Building Repairs and improvements</i>	11483	0	5574		17057	38911
All Saints Shorthampton						
<i>Building Repairs and improvements</i>			2472		2472	0
	11483	0	8046	0	19529	38911

Parish of St. Mary's Charlbury with All Saints' Shorthampton

Note 6. The General Fund is used primarily to finance the operational budget of the PCC. Table 4 provides a more detailed breakdown of General Fund income and expenditure by category.

Table 4: General Fund - Operational Income and Expenditure (Detailed)

Operational Income (General Fund)	<u>2025</u>	<u>2024</u>
Planned Giving	59035	59186
<i>Parish Giving Scheme</i>	<i>49228</i>	<i>49966</i>
<i>Standing Orders</i>	<i>9806</i>	<i>9220</i>
<i>Envelopes</i>	<i>0</i>	<i>0</i>
<i>Other Planned giving</i>	<i>0</i>	<i>0</i>
Other Giving	19592	15165
<i>One off donations</i>	<i>5787</i>	<i>7248</i>
<i>Collections at Services</i>	<i>10089</i>	<i>5799</i>
<i>Wall Boxes and Card Reader</i>	<i>3716</i>	<i>2118</i>
Gift Aid Recovery	11232	13371
Grants	1000	300
Fund Raising Activities	19718	15566
PCC Fees (Weddings + Funerals)	4487	4700
Hire and use of Church Facilities	655	890
Investment Income	1453	1532
Other Receipts	585	573
Charitable Donations from PCC funds	-40	
Total Operational Income	117717	111283
Operational Expenditure (General Fund)		
Parish Share	58088	58091
Clergy and Assistants Expenses	300	3625
Church and Outreach Activities	1296	4060
Parish Administration	18501	15392
<i>Administrators' Services</i>	<i>13271</i>	<i>11589</i>
<i>Office Equipment + Consumables</i>	<i>2077</i>	<i>2845</i>
<i>Photocopying + Printing + IT support</i>	<i>1810</i>	<i>0</i>
<i>Telephone + Internet</i>	<i>1343</i>	<i>958</i>
Utilities	7765	8437
<i>Electricity</i>	<i>4001</i>	<i>3833</i>
<i>Gas</i>	<i>3764</i>	<i>4604</i>
Church Cleaning	2668	1450
Building Maintenance + Minor Repair	11484	8814
Equipment Repairs /Maintenance	0	0
Churchyard Maintenance	9544	3680
Insurance	5622	5540
Fundraising Costs	533	2182
Other PCC expenses	380	203
Total Operational Expenditure	116181	111474
Excess of Income over Expenditure	1536	-191

Parish of St. Mary's Charlbury with All Saints' Shorthampton

Financial Statements for the Year Ended 31 December 2025

Independent Examiner's Report to the PCC of St. Mary's Charlbury

with All Saints' Shorthampton

This report on the financial statements of the PCC for the year ending 31st December 2025, which are set out in Appendix 1 to the PCC Annual Report for 2025, is in respect of the examination carried out in accordance with Church Accounting Regulations and Section 43 of the Charities Act 1991.

Respective Responsibilities of the PCC and the Examiner

As members of the PCC you are responsible for the preparation of the financial statements. You consider that the audit requirement of the Regulations and the Section 43(2) of the Act do not apply (income/expenditure above £250,000). It is my responsibility to issue this report to those financial statements in accordance with the terms of the Regulations.

Basis of this Report

My examination was carried out in accordance with the directions given by the Charity Commission under section 43(7)b of the Act to be found in the Church Guidance 2006 edition issued by the Archbishop's Council. The examination includes a review of the accounting records kept by the PCC. It also includes considering any unusual terms or disclosures in the financial statements and seeking explanations from you as trustees concerning any such matters. The procedures undertaken do not provide all the evidence that would be required in an audit and consequently I do not express an audit opinion on the view given by the accounts.

Independent Examiner's Statement

In connection with my examination, no matter has come to my attention:

- (i) which gives me cause to believe that in any material respect the requirements to keep accounting records in accordance with Section 41 of the Act and to prepare financial statements which comply with the Act have not been met; or
- (ii) to which in my opinion, attention should be drawn in order to enable a proper understanding of the accounts to have been reached.

Tony Morgan

**Independent Examiner
040225**

Appendix 2: APCM 2025 Minutes

Meeting of Parishioners 2025

St Mary's Charlbury and All Saints' Shorthampton Meeting of Parishioners 2025

The meeting of Parishioners was held at St Mary's Church, Charlbury on Sunday 27th April 2025 at 11.15am.

Election of Churchwardens. Both churchwardens are willing to stand again. Patrick (Paddy) Gallagher was proposed by Mike Summers and seconded by Daniela Jenkins. John (Dine) Glasgow was proposed by Ann Roberts and seconded by Louise Whitehead. There were no other nominations so they were duly elected as all were in favour. They were very much thanked for all the work and service they have done and will continue to do for St Mary's and All Saints'.

Annual Parochial Church Meeting 2025

Revd Fergus Butler-Gallie took the chair and welcomed everyone to the meeting.

Apologies for absence were received from Paddy Gallagher, Stephen & Georgie Slack, Betty Harvey, John Partington, Anna Fairhurst, Daniela Jenkins, Angela Dastor, Sheila Glen, Bob & Liz Tait.

Approval of Minutes of the APCM of 2024. There was unanimous approval of the minutes for 2024.

Report on changes in the Electoral Roll. This year there was a complete revision of the Electoral Roll. 102 names are on it but it is expected that this number will increase as more members of the congregation are encouraged to sign up.

Annual report of the Parochial Church Council (PCC) 2024. The booklet containing this report has been compiled by the Parish Administrator Josie Cope. A huge vote of thanks is due to Josie for the enormous amount of work that is involved in compiling this excellent report.

Vicar's Report; the year's summary is found on Page 3 – 5 of the annual report. Fergus added that he wanted to say a word of thanks for the rich variety of things organised within the church and to thank all the attendees at this meeting most of whom are involved in one way or another.

Financial statement: the financial review is on page 36 – 39.

All is going according to budget but we need to try and increase income from the Parish Giving scheme. We can do this by encouraging more members of the congregation to join it and for those already on, to increase their donations in line with inflation. If we could get the Parish Giving scheme to cover costs then we would have the ability to do other things – have a curate, youth worker etc. Instead we have to cover the deficit with fund raising. It would be good also to remind people how helpful legacies are to our finances. Fergus expressed his enormous thanks to Peter for all his work as treasurer.

Fabric, goods and ornaments of the church.

Almost all that is needed to be said is in the annual report on page 11. Major work will need to be done on St Mary's church roof but not for 2-3 years. Shorthampton – All Saints' is about to have a new lighting system. Fergus expressed his thanks to Amanda for all the work she does looking after All Saints' and also his thanks to Paddy Gallagher and Mike Summers for all their hard work looking after the fabric of St Mary's.

Safeguarding: this can be found on pages 6 and 7 in the annual report. There is a huge amount of work involved with keeping the safe-guarding records up to date. There is a positive culture in St Mary's with regards to this which is extremely helpful. Josie Cope our Parish Administrator needs to be thanked sincerely for all her hard work and Louise Whitehead our Safeguarding Officer also needs a huge vote of thanks.

Deanery Synod Report. This is found in the annual report on page 16.

Elections to the PCC

Mike Summers proposed by Liz Partington, seconded by Libby Hanks
Amanda Cooper proposed by Dine Glasgow, seconded by Paddy Gallagher
Libby Hanks proposed by Liz Partington, seconded by Rachel Gallagher
Anna Boardwell proposed by Paddy Gallagher, seconded by Dine Glasgow
There was unanimous approval of these appointments. Thanks was also expressed to Anna Fairhurst for all her positive help while she has been on the PCC.

Appointment of Independent Examiner of Accounts Tony Morgan is to be asked if he would be willing to do this again for this year's accounts. Proposed by Dine Glasgow and seconded by Mike Summers, all were in favour.

A.O.B.

Elections of members to the PCC. The congregation should be reminded, well before the APCM, that nominations for new members of the PCC are welcome. Next year we will have nomination forms at the back of the church and remind people of this in the Messenger and at notices at the end of services. Fergus expressed his profuse thanks for all the people active behind the scenes in the church. These include flower arrangers, coffee makers, bell ringers, those who help at funerals, Maureen Sparling who helps so much with the security of the church, children's work, Font Café workers, Stay and Play helpers, those who help at Messy Church and Memory Café. The list goes on and on – it shows what an incredible amount going on and how much the church gives to the community of Charlbury. The PCC need to discuss the approach of the congregation as they move forward to take communion. Sometimes people are unsure of when or where to go. Perhaps the Welcomers could help with this. Help is still needed with various activities within the church – welcoming, coffee making, chalice etc. Fergus was thanked for all his 'thanking'! It was remarked it is wonderful to have a priest who is so good at thanking! Dine thanked Josie for working so hard and being so very efficient.

Jo Paton is doing an excellent job with Cornerstone and has managed remarkably well with the move to the Green Room and now the move back to the Corner House. Stay and Play is another great success. There are now 17 families on the books – a huge thank you to Sue Hadley for running this. A huge thank you also to Paddy who spends so much of his time within the church supervising tree surgeons, plumbers, electricians, roof workers etc. Dine couldn't manage without him! Fergus commented on the remarkable number of people at the Easter service and asked us to continue to reach out to the community of Charlbury and to continue to pray for them.

The meeting closed at 11.50am

Appendix 3: APCM 2026 Agenda

Meeting of Parishioners

The Meeting of Parishioners will be held in St. Mary the Virgin, Charlbury on Sunday 26th April 2026 at 11.15am.



Agenda

Election of two Churchwardens - all those on the Church Electoral Roll and residents of the parish, whose names are entered on the register of local government electors, are entitled to vote.

This will be followed immediately by:

The Annual Parochial Church Meeting

Those entered on the Church Electoral Roll may participate in and vote in the meeting. Other members of the parish may attend, with the agreement of the meeting, but not vote.

Agenda

1. Apologies for absence
2. Approval of minutes of the APCM for 2025
3. Report on changes in the Electoral Roll
4. Annual Report of the Parochial Church Council (PCC) 2026
 - Vicar's report
 - Financial statement
 - Fabric report
 - Safeguarding
 - Deanery Synod report
5. Elections and Appointments
 - Election of representatives to the PCC
 - Election of representatives to Deanery Synod
 - Appointment of Independent Examiner of Accounts
6. Any Other Business



Messy Nativity.

Annual Report of the PCC 2025 Charlbury with Shorthampton

**Photographs © St Mary's Church, Charlbury and
All Saints' Church, Shorthampton's congregations and E. Blok**

March 2026